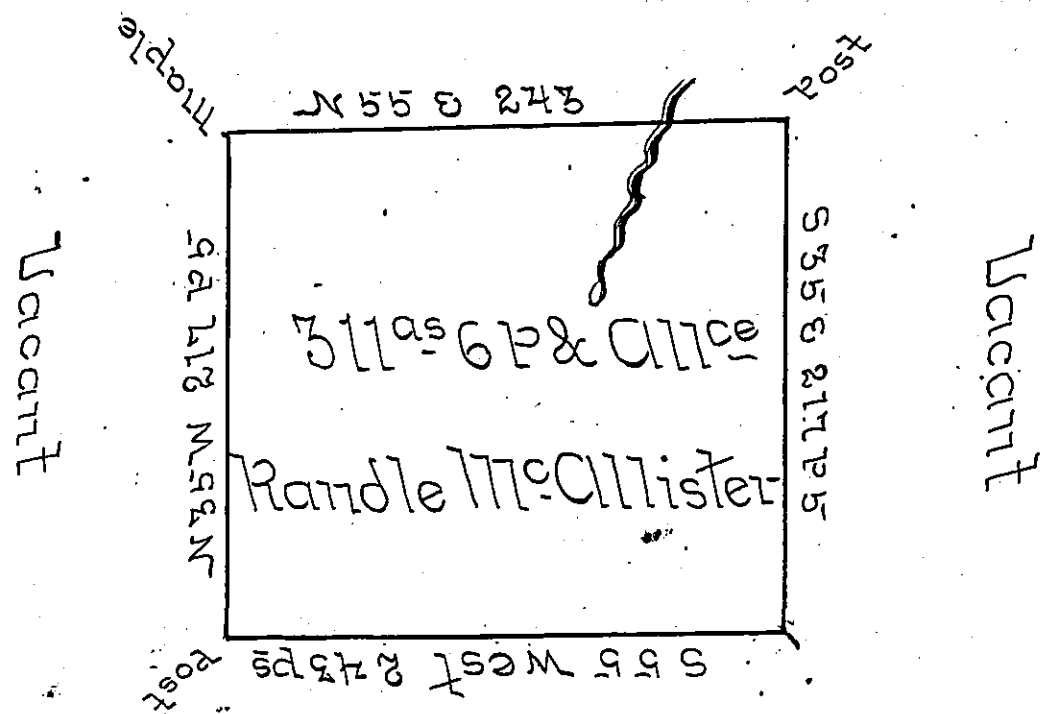


Vacant



Thomas Jordan
Page 269

Situate on the waters of Conemaugh in the County of Bedford containing three hundred and eleven Acres and six perches with the usual Allowance of six Per Cent for roads &c^a Surveyed for Randle McAllister the 2^d day of July 1754 in pursuance of a Warrant dated the 20th day of July 1753. Taken from the field Notes of George Woods late Dep^y Surveyor of Bedford County January 4th 1793

George Woods Jun^r D.S.

To Daniel Brodhead Esq^r S.G.

A Copy of the Original remaining filed in the Surveyor General's Office the 15th April 1801

for Sam^l Cochran Esq^r S.G.
Sam^l Clendenin

IN TESTIMONY that the above is a copy of the original remaining on file in the Department of Internal Affairs of Pennsylvania, made conformably to an Act of Assembly approved the 16th day of February, 1833, I have hereunto set my Hand and caused the Seal of said Department to be affixed at Harrisburg, this first day of August 1899.

James W. Latta
Secretary of Internal Affairs.